

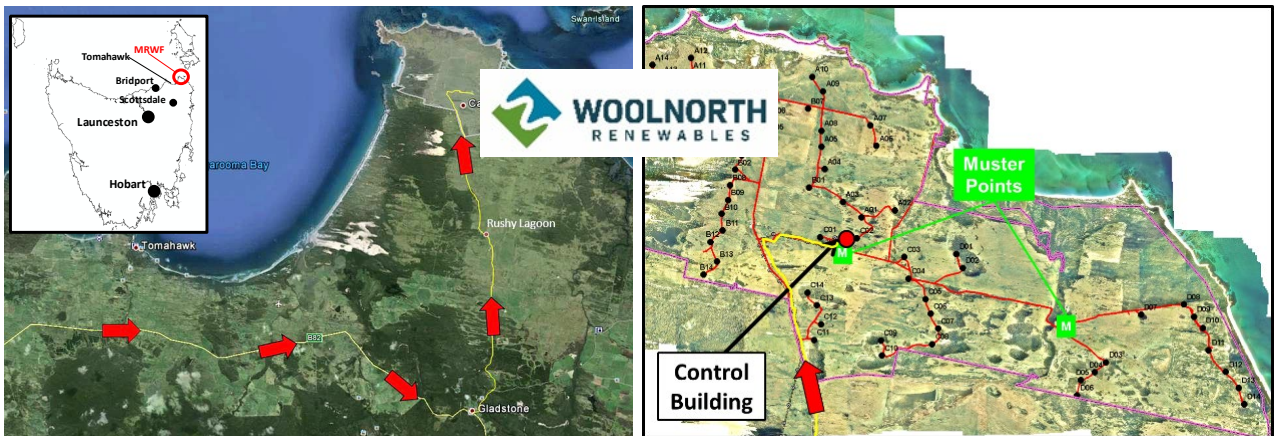
Musselroe Wind Farm Site Information



Musselroe Wind Farm (MRWF) is owned and managed by Woolnorth Wind Farm Holding Pty Ltd, operating as Woolnorth Renewables (WNR), a joint venture company owned by Hydro Tasmania (HT, 25%) and Shenhua Clean Energy Holdings (75%). Vestas is the primary operation and maintenance contractor for the turbines whilst the balance of plant are directly managed by Woolnorth Renewables.

Site Location & Layout

MRWF is located 25km north of Gladstone in north-east Tasmania, on the Cape Portland property. The wind farm consists of 56 V90 (3 megawatt) Vestas turbines and a 50 km (110kV, 154 tower) single circuit transmission line connected to the national grid at the Derby sub-station.



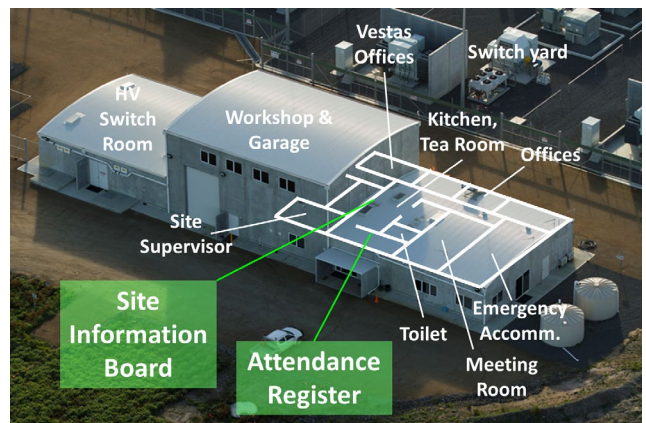
HSE Management System

MRWF is managed under the WNR Health, Safety & Environment System. All HSE documents are available at <https://woolnorthrenewables.com.au/health-safety-environment/>.

Contact

Email – info@woolnorthwind.com.au

Phone – 1800 870 776



The wind farm is remote with No visitor reception.
BEFORE travelling to site, contact your site representative.

Refer to page 4 for induction information.

Required PPE

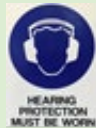
The mandatory PPE requirements for staff and contractors are:

- High visibility long-sleeved shirt and long trousers or overalls, and
- Closed footwear with protective toecaps



Additional mandatory PPE requirements for staff and contractors working in restricted areas and on active high-risk work sites are:

- Head protection,
- the carrying of hearing protection, eye protection and gloves, and
- Cat 2 arc Flash PPE where required.



Traffic Management

- Speed limits are signposted across the site and are to be adhered to.
- Off-road driving requires authorisation.
- Vehicles are to be parked into the wind and out of turbine “drop zone”.
- All vehicles are to arrive registered, clean, well serviced, have first aid kits & fire extinguishers.

Site Communications

- Telephones and internet (wireless and port) are available at the control building
- Cape Portland generally has poor mobile phone reception; however, the control building does have a local reception booster.
- Vestas have a private UHF channel with a site repeater, while the farm staff operate on open UHF channel 16.

Site Security and Access

- All personnel must register their attendance when arriving and leaving site.
- Security gates operated via swipe card control access to the site. (see Site Super. for card).
- There is no reception on site, so visitors need to organise their arrival in advance.
- Afterhours access - the control building's security system and game management shooting need to be considered.

Site Safety, First Aid & Emergencies

- The Safety Management and Emergency Response Plans are at the site information board as well as available at the Woolnorth Renewables website.
- First aid kits are located in the Control Building, and site vehicles.
- A defibrillation unit is located in the Control Building.
- All site personnel are Lvl 2 first aid trained.

For EMERGENCY SERVICES in Australia ring 000

Hazards

- Site remoteness – poor comms, slow emergency service response.
- Weather conditions can be extreme on site with strong winds, hot fire-risk weather in summer and wet conditions possible any time of year.
- High incidence of snakes on site, gaiters must be used if in long grass.
- MRWF is a multiple use site with staff, contractors, farm staff, tourism activities, heavy vehicles, and private access taking place.
- Access to MRWF is via gravel roads with frequent wildlife.

Drugs, Alcohol & Smoking

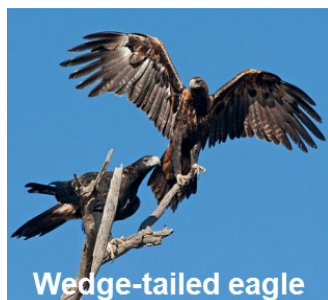
- Random drug and alcohol testing, 0.0 BAL, 0 tolerance
- Smoking on hardstands only- all butts to be binned.

Chemicals

All Haz Chems and Dangerous Goods in significant volumes are to be approved with an SDS prior to entry. Their storage, handling, use, and disposal are to be conducted in accordance with their SDS, Australian Standards, and the On-Site Chemical Management Protocols.

Environment

- MRWF operates under state and commonwealth environmental permits, and associated management plans (EMP's).
- All the environmental management requirements for the site are consolidated in the Site EMP.
- One of the most significant concerns for MRWF is the collision of birds with turbine blades. Considerable research is conducted to understand the risk, however, any bird collisions that are identified need to be reported immediately
- No pets, firearms, firewood collection or fires are allowed on site, without authorisation.
- All rubbish is to be disposed of in bins. A waste transfer point exists at the site chemical store.
- All machines, vehicles and equipment are to arrive at site free of mud and vegetation.



Wedge-tailed eagle



White-bellied sea eagle

Heritage

Cape Portland holds considerable Aboriginal and European heritage value, with numerous artefacts, features and stories relating to the property. If any items of apparent heritage value are identified, then the Site Supervisor should be notified immediately.

Farming Activities

The Cape Portland property is owned by Hydro Tasmania. The property is grazed under a licence for beef production.

Reporting of Incidents

All incident and hazardous observations are to be reported to the site supervisor. These include injuries, near misses, spills, dead or injured animals (farm or native), equipment failures or trespassers.

Musselroe Wind Farm
2205 Cape Portland Road
Cape Portland, TAS 7264
Freight: Contact Site Supervisor

Woolnorth Wind Farm Holding Pty Ltd
ACN: 154 051 617
Level 2, 33 George Street
Launceston, Tasmania 7250

INDUCTIONS

Contractors who have been engaged to work on a Woolnorth Renewables site should contact their company representative to arrange the necessary inductions required to complete their work. To complete the on-line induction, you must:

- Access the Woolnorth Renewables *Health Safety and Environment* page through our public website
- Navigate to the '**Contractors**' tab, read ALL the information before selecting the link to complete your registration.
- The majority of the information for the induction training is from our Inductions, Training & Site Access Procedure. Please navigate to the '**Health Safety and Environment Management System**' tab and open this procedure.

woolnorthrenewables.com.au/health-safety-environment

- During the induction process you may be required to upload documents such as Driver's License, Electrical Practitioners Licence and Working at Heights certificate. Please have any such documents relevant to your work available for upload.

The screenshot shows the Woolnorth Renewables website navigation menu with 'HEALTH, SAFETY & ENVIRONMENT' selected. Below the menu, the 'Health Safety and Environment Management System' page is displayed. The page content includes a description of the HSE Management System and a list of links. The 'Contractors' link is circled in red, and the 'Health Safety and Environment Management System' link is circled in green.

WOOLNORTH RENEWABLES

HOME ABOUT WIND FARMS OTHER PROJECTS **HEALTH, SAFETY & ENVIRONMENT** COMMUNITY CONTACT PRIVACY POLICY

Health Safety and Environment Management System

Woolnorth Renewables have developed a series of documents that assist us in the management of the Health, Safety and Environmental concerns of its business and are referred to as its HSE Management System.

These documents cover the range of core activities and risks that the business manages. In addition, however, Woolnorth Renewables relies on codes of practise, manufacturer's instructions, expert advice and job specific risk assessment to supplement the system. Our HSE

- Health Safety and Environment Management System
- Site Documents
- Contractors**
- Annual / Public

If you have any concerns regarding the online induction process, please email inductions@woolnorth.com.au for assistance or contact your site representative.