

Studland Bay Wind Farm

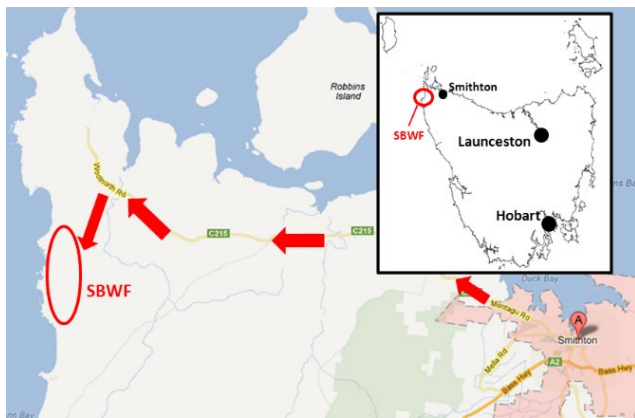
Site Information



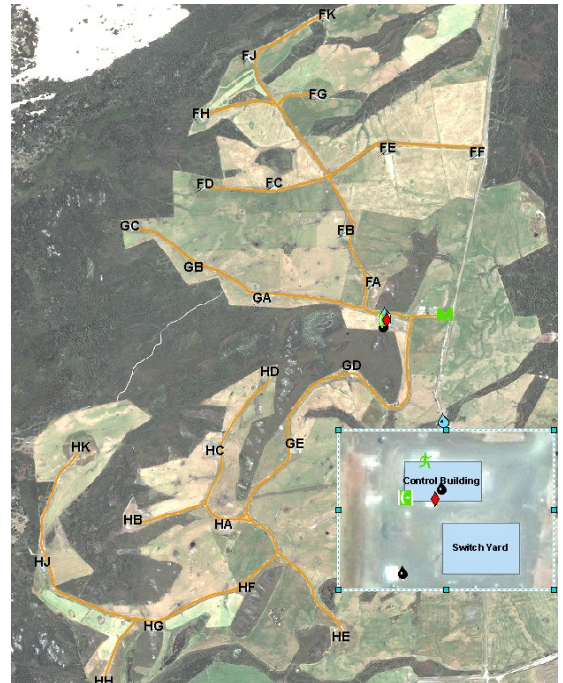
Studland Bay Wind Farm (SBWF) is owned and managed by Woolnorth Wind Farm Holding Pty Ltd (Woolnorth Wind Farms, WNH), a joint venture company owned by Hydro Tasmania (25%) and Shenhua Clean Energy Holdings (75%). All the operation and maintenance on the turbines and balance of plant are conducted by Woolnorth Wind Farms

Location

SBWF is located 36km west of Smithton in northwest Tasmania. The wind farm consists of 25 V90 (3 megawatt) Vestas turbines and a 43 km (110kV, 148 tower) single circuit transmission line connected to the national grid at Smithton sub-station.



Site Layout



Contacts

Email – info@woolnorthwind.com.au

Phone – 1800 870 776

HSE Management System

SBWF is managed under the WNR Health, Safety & Environment System.
All HSE documents are available at <https://woolnorthrenewables.com.au/health-safety-environment/>.

The wind farm is remote with No visitor reception.
BEFORE travelling to site, contact your site representative.
Refer to page 4 for Induction Information.

Required PPE

The mandatory PPE requirements for staff and contractors are:

- High visibility long-sleeved shirt and long trousers or overalls, and
- Closed footwear with protective toecaps



Additional mandatory PPE requirements for staff and contractors working in restricted areas and on active high-risk work sites are:

- Head protection,
- the carrying of hearing protection, eye protection and gloves, and
- Cat 2 arc Flash PPE where required.



Traffic Management

- Speed limits are signposted across the site and are to be adhered to.
- Off-road driving requires authorisation.
- Vehicles are to be parked into the wind and out of turbine “drop zone”.
- All vehicles are to arrive registered, clean, well serviced, have first aid kits & fire extinguishers.

Site Communications

- Telephones and internet (wireless and port) are available at the control building
- SBWF often has poor mobile phone reception; however, the control building does have a local reception booster.
- Internet access can be made available.

Site Security and Access

- All personnel must register their attendance when arriving and leaving site.
- Security gates operated via swipe card control access to the site. (see Site Super. for card).
- Visitors need to organise their arrival in advance.
- Afterhours access - the control building's security system and game management shooting need to be considered.

Site Safety, First Aid & Emergencies

- The Safety Management and Emergency Response Plans are at the site information board as well as available at the Woolnorth Renewables website, refer to page 1.
- First Aid Kits are located in the Control Building, and site vehicles.
- A defibrillation unit is located in the Control Building.
- All site personnel are Lvl 2 First Aid trained.

Hazards

- Site remoteness – poor comms, slow emergency service response.
- Weather conditions can be extreme on site with strong winds, hot fire-risk weather in summer and wet conditions possible any time of year.
- High incidence of snakes on site, gaiters must be used if in long grass.
- SBWF is a multiple use site with staff, contractors, farm staff, tourism activities, heavy vehicles present.

For EMERGENCY SERVICES in Australia ring 000

Drugs, Alcohol & Smoking

- Random drug and alcohol testing, 0.0 BAL, 0 tolerance
- Smoking on hardstands only- all butts to be binned.

Chemicals

All chemicals stored on site are to be approved with an SDS prior to entry. Their storage, handling, use, and disposal are to be conducted in accordance with their SDS, Australian Standards, and the On-Site Chemical Management Protocol.

Environment

- SBWF operates under state and commonwealth environmental permits, and associated management plans (EMP's).
- All the environmental management requirements for the site are consolidated in the Site EMP.
- One of the most significant concerns for SBWF is the collision of birds with turbine blades. Considerable research is conducted to understand the risk, however, any bird collisions that are identified need to be reported immediately
- No pets, firearms, firewood collection or fires are allowed on site, without authorisation.
- All rubbish is to be disposed of in bins. A waste transfer point exists at the site control building.
- All machines, vehicles and equipment are to arrive at site free of mud and vegetation.



Wedge-tailed eagle



White-bellied sea eagle

Heritage

The Studland Bay property is home to a number of Aboriginal heritage sites. If any items of apparent heritage value are identified, then the Site Supervisor should be notified immediately.

Farming Activities

The Studland Bay property is owned by Woolnorth Renewables. The property is licenced to a grazier for dairy and dairy-support production.

Reporting of Incidents

All incident and hazardous observations are to be reported to the site supervisor. These include injuries, near misses, spills, dead or injured animals (farm or native), equipment failures or trespassers.

Bluff Point Wind Farm

1665 Woolnorth Road,
Woolnorth, TAS 7250

Woolnorth Wind Farm Holding Pty Ltd

ACN: 154 051 617
Level 2, 33 George Street
Launceston, Tasmania 7250

Inductions

Contractors who have been engaged to work on a Woolnorth Renewables site should contact their company representative to arrange the necessary inductions required to complete their work. To complete the on-line induction, you must:

- Access the Woolnorth Renewables *Health Safety and Environment* page through our public website
- Navigate to the '**Contractors**' tab, read ALL the information before selecting the link to complete your registration.
- The majority of the information for the induction training is from our Inductions, Training & Site Access Procedure. Please navigate to the '**Health Safety and Environment Management System**' tab and open this procedure.

woolnorthrenewables.com.au/health-safety-environment

- During the induction process you may be required to upload documents such as Driver's License, Electrical Practitioners Licence and Working at Heights certificate. Please have any such documents relevant to your work available for upload.



HOME

ABOUT

WIND FARMS

OTHER PROJECTS

HEALTH, SAFETY & ENVIRONMENT

COMMUNITY

CONTACT

PRIVACY POLICY

Health Safety and Environment Management System

Woolnorth Renewables have developed a series of documents that assist us in the management of the Health, Safety and Environmental concerns of its business and are referred to as its HSE Management System.

These documents cover the range of core activities and risks that the business manages. In addition, however, Woolnorth Renewables relies on codes of practise, manufacturer's instructions, expert advice and job specific risk assessments to supplement the system. Our HSE

Health Safety and Environment Management System

Site Documents

Contractors

Annual / Public

If you have any concerns regarding the online induction process, please email inductions@woolnorth.com.au for assistance or contact your site representative.